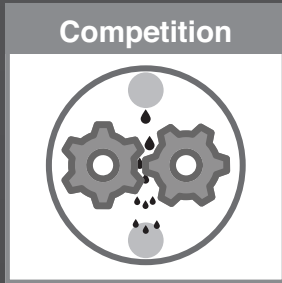
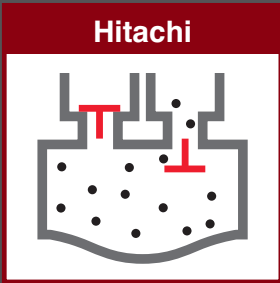
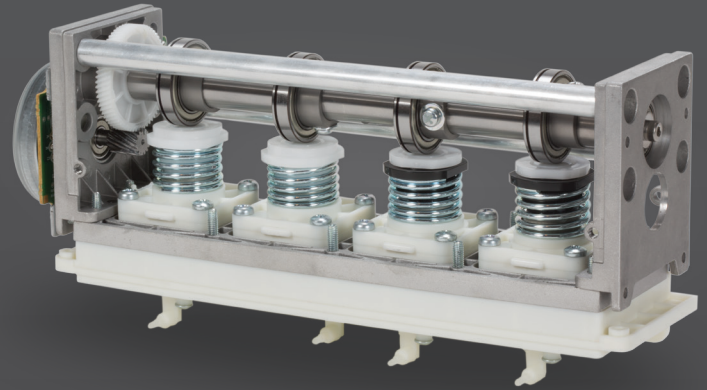




THE HEART OF RELIABILITY

Increased Ink Integrity

Unlike a gear pump, a diaphragm pump does not shear the ink passing through it. Ink shearing results in lower viscosity and can adversely affect print quality. Hitachi diaphragm pumps provide a consistent supply of ink to the print head.



Designed & Built by Hitachi

The diaphragm pump is the heart of each Hitachi printer. For this reason, Hitachi doesn't use an off-the-shelf product. Each pump is designed and built by Hitachi to the highest standards.



Heavy on Quality

Hitachi diaphragm pumps are one of the heaviest components in each printer. This weight is due to the high-quality components used in the manufacturing of each pump. Quality is never compromised. You create superior products. You should have a partner who does too.



Quad Chamber Design

Each pump is designed with four chambers allowing pump load to be distributed. Subsequently, the life span of each printer is significantly improved over single chamber pump designs.

4

Individual Pump Replacement

By allowing each ultra-reliable pump to be replaced individually, the Total Cost of Ownership for a UX Series printer is minimized.



UX Specialty Key Features

Hitachi's UX Series continuous inkjet printers represent the pinnacle of innovation in marking and coding technology, all while showcasing Hitachi's reputation for Reliability, Efficiency, and Ease of Use.

Efficient Ink Recovery



Reduced Makeup Consumption and Running Cost

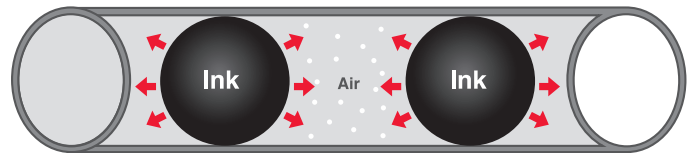
Featuring Pulse Recovery Technology

Hitachi's ink recovery technique and motor speed control, that is based on environmental conditions, suppresses makeup evaporation, thus achieving industry levels of low makeup consumption.



Traditional Fluid Recovery Systems

Ink passes through a channel of air increasing the evaporation rate and, consequently, fluid makeup consumption.



Hitachi's Pulse Recovery System

Ink is recovered using a pulsating system, which reduces the evaporation rate and makeup consumption, thus increasing your bottom line.

* As compared to Hitachi's current models with 1067K ink at 20°C. About 30% reduction for UX-B and UX-D.

Worry Free Integration



IP-65

The UX Dynamic model printer is IP-65 rated, meaning it can be integrated into a variety of production environments without worry or modification to current production processes such as wash-down procedures. Hitachi UX Series printers can operate in High and Low temperature environments as well as dusty environments, allowing them to be placed close to the action. UX Basic machines are IP-55 standard.



High-Temperature
up to 50°C (122°F)



Dusty Environment



Low-Temperature
down to 0°C (32°F)



Wash-Down

Intuitive Print Control



Intuitive User Interface

A 10.4-inch TFT LCD touch-panel screen provides a wide, easy-to-see viewing angle and intuitive operation. In addition, when changing print messages, a preview function allows the operator to verify on screen what message will be changed to help avoid erroneous printing.



Troubleshooting Guide

The UX Series features an integrated, easy to access troubleshooting guide, helping operators easily find answers to common issues and reducing downtime due to simple problems.



Easy USB Message Transfer

Messages can be easily backed up onto a USB flash drive for convenient transferring to other printers.



Informative Icons

Icons on screen provide simple, visual feedback to an operator. Ink and Makeup level gauges show the current fluid level and indicate when it's time to replace each cartridge. This allows for more efficient ink usage, reduces waste, and further contributes to cost reduction.

Pigmented - High Performance for High Contrast



Easy Automated Nozzle Cleaning

Nozzle cleaning is as simple as pressing a button. Once nozzle cleaning is completed the printer will be set to stop mode automatically. The UX Series Pigmented printer also supports nozzle backwash functions, which allows cleaning fluid to be ingested through the nozzle, quickly and easily clearing any clogs.



Airless Stirring System

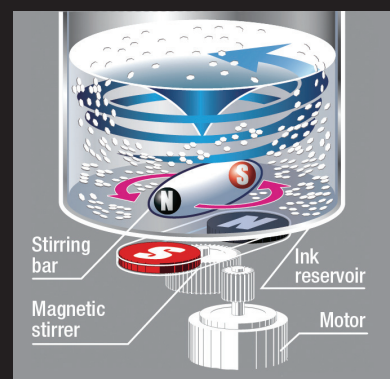
Most pigmented inkjet systems require air to prevent settling and agglomeration, but the UX Series Pigmented inkjet printer relies on a simple, yet highly effective Magitate system. This system reduces filter and nozzle clogging and eliminates the need for costly modifications to your compressed air system.



Worry-Free Standby Circulation

The UX Series Pigmented inkjet printer also incorporates an ink circulation control method that allows ink to circulate even in standby mode. This helps to prevent ink fixing, increasing operational efficiency and further reducing potential downtime.

Magnet + Agitate = Magitate



Application Photos



Print Samples (Approx. Full Scale)

| Font (Horizontal x Vertical) | UX-P160W/S | | | | | |
|---|--|---|---|---|---------------------|--|
| 5x5 | TLINE 小 0123456789ABCDEF GH 大 012345678 | 2LINE 012345678 ABCDEFGHI | 3LINE 012345678 ABCDEFGHI JKLMNOPQR | 6LINE 012345678 ABCDEFGHI JKLMNOPQR STUVWXYZ 012345678 ABCDEFGHI JKLMNOPQR STUVWXYZ | | |
| 5x7 | TLINE 小 0123456789ABCD 大 0123456 | 2LINE 012345678 ABCDEFGHI | 3LINE 012345678 ABCDEFGHI JKLMNOPQR | 4LINE 012345678 ABCDEFGHI JKLMNOPQR STUVWXYZ | | |
| 7x10 | TLINE 小 0123456789 大 012345 | 2LINE 01234567 ABCDEFGH | 3LINE 0123456789012345678 ABCDEFGHIJKL MNOPQRS TUVWXYZABCDEFGHIJKL | | | |
| 10x12 | TLINE 小 0123456789ABCD 大 0123456789 | 2LINE 01234567890 ABCDEFGHIJK | | | | |
| 12x16 | TLINE 小 0123456789ABC アイウエオカキクケコ 大 0123456 01  | 2LINE 01234 ABCDE | | | | |
| 18x24 | TLINE 小 0123456789  大 0123456ABC  | | | | | |
| 24x32 | TLINE 小 0123456789ABCDEF 大 012345   | | | | | |
| 30x40 | TLINE 012345ABCDEF | | | | | |
| 36x48 | TLINE 012345ABCD | | | | | |
| Logo | JIS mark | CE mark | UL mark | DIN printing | Chimney printing | |
|  |  |  |  | ABC 08H | 0 1 2 3 4 5 6 7 8 9 | |

| Item | | Model UX-P160 W / S |
|--|--------------------|---|
| Nozzle Size | | 65µm |
| Max. # of Print Lines | | Up to 6 lines |
| Max. # of Print Characters | | Up to 1,000 characters |
| Font (horizontal x vertical) | 4 x 5 | ✓ |
| | 5 x 5 | ✓ |
| | 5 x 7(8), 9 x 7(8) | ✓ |
| | 7 x 10 | ✓ |
| | 11 x 11 | ✓ (Chinese Only) |
| | 10 x 12 | ✓ |
| | 12 x 16 | ✓ |
| | 18 x 24 | ✓ |
| | 24 x 32 | ✓ |
| | 30 x 40 | ✓ |
| 36 x 48 | ✓ | |
| Character Height | | 2 - 10 mm |
| Display & Input Device | | WYSIWYG Design Display: TFT LCD (10.4" color), backlight provided Input Device: Touch Panel, Input Sound Provided |
| Screen Language (2 languages selectable) | | English, Chinese, Korean, Thai, Vietnamese, German, French, Dutch, Italian, Spanish, Portuguese, Swedish, Danish, Greek, Russian, Czech, Polish, Arabic, Serbian, Turkish, Hungarian, Bulgarian, Catalan, Romanian, Finnish, Norwegian, Slovenian |
| Max. Print Rate (Characters per second) (Font 5x5, space 1, 1 Line) | | Up to 2,083 (JP-W89 Ink) |
| Standard Characters | | Alphanumeric (A-Z, a-z, 0-9), Symbols (27) and Space: Total 90 |
| User Patterns | | 200 patterns each for dot matrix |
| Print Function | | Calendar, Count, Font mixture |
| Barcode Printing | | code39, ITF, NW-7, EAN-13, EAN-8, UPC-A, UPC-E, code128/EAN-128, GS-1 DataBar |
| 2D Code Printing | | Data Matrix (Alphabet: 49 characters/Numerals: 98 characters), QR code, Micro QR code |
| Message Storage Capacity | | Up to 2,000 messages (depends on data content) |
| Input Signal | | Print target detection, Printing stop, Rotary encoder pulse, Reciprocative printing, Remote control (Run, Stop, High-voltage ON / OFF, Reset), (NPN / PNP Selectable) |
| Output Signal | | Print in progress or Print complete, Online (NPN / PNP Selectable), Print ready, Fault, Warning (NPN Only) |
| Data Interface | | RS-232C at baud rates selectable up to 115,200bps |
| Ethernet | | IEEE802.3, 100BASE-T |
| External Memory | | USB for user data storage |
| Print Head Cable Length/Angle | | 4m (in-line/90 degrees) |
| Operating Temperature Range | | 0-40°C (JP-W89 Ink) |
| Operating Humidity Range | | 30-90% RH (no condensation) |
| Power Supply (Automatic Voltage Selection) | | AC100-120/220-240V±10% 50/60Hz 120VA |
| Approval | | CE, UL, cUL, RCM, FCC, ICES |
| Dimensions (W x D x H) | | 400 x 320 x 527 mm |
| International Protection | | IP65 |
| Approximate Weight | | 27kg |

